

Section : General English

Q.1 Select the most appropriate synonym of the given word.

Forgive

- Ans 1. Pardon
 2. Forget
 3. Accuse
 4. Compel

Question ID : 2390871017

Status : Answered

Chosen Option : 1

Q.2 Select the most appropriate synonym of the given word.

Agile

- Ans 1. Quick
 2. Rigid
 3. Stiff
 4. Dull

Question ID : 2390871018

Status : Answered

Chosen Option : 2

Q.3 Find the part of the given sentence that has an error in it. If there is no error, choose 'No error'.

Do not let the opportunity slip away and you will repent. /No error

- Ans 1. and you will repent
 2. opportunity slip away
 3. No error
 4. Do not let the

Question ID : 2390871003

Status : Answered

Chosen Option : 1

Q.4 Select the most appropriate option to substitute the underlined segment in the given sentence. If there is no need to substitute it, select No Improvement.

He lives in this remote colony since 2001.

- Ans
- 1. have been living
 - 2. No Improvement
 - 3. continues to live
 - 4. has been living

Question ID : 2390871007
Status : Answered
Chosen Option : 4

Q.5 Choose the correctly spelt word.

- Ans
- 1. Konvenience
 - 2. Conveniense
 - 3. Convenience
 - 4. Convinience

Question ID : 2390871025
Status : Answered
Chosen Option : 3

Q.6 Choose the correctly spelt word.

- Ans
- 1. Axilarate
 - 2. Exhilarate
 - 3. Axhilarate
 - 4. Exilarate

Question ID : 2390871026
Status : Answered
Chosen Option : 2

Q.7 Choose the most appropriate word that can substitute the given group of words.

One who is unable to read or write.

- Ans
- 1. Incomprehensible
 - 2. Frugal
 - 3. Illiterate
 - 4. Illegible

Question ID : 2390871024
Status : Answered
Chosen Option : 3

Q.8 Select the most appropriate option to fill in the blank.

Marconi _____ the radio.

- Ans
- 1. assembled
 - 2. discovered
 - 3. invented
 - 4. built

Question ID : 2390871028

Status : **Answered**
Chosen Option : **3**

Q.9 Select the most appropriate antonym of the given word.

Approve

- Ans 1. Reject
 2. Appeal
 3. Confirm
 4. Agree

Question ID : **2390871020**
Status : **Answered**
Chosen Option : **1**

Q.10 Select the most appropriate meaning of the given idiom.

Cut one short

- Ans 1. To chop something
 2. To act quickly
 3. To interrupt someone
 4. To be rude

Question ID : **2390871021**
Status : **Answered**
Chosen Option : **3**

Q.11 Select the most appropriate antonym of the given word.

Captivity

- Ans 1. Liberty
 2. Imprisonment
 3. Cheer
 4. Offense

Question ID : **2390871019**
Status : **Answered**
Chosen Option : **1**

Q.12 Select the most appropriate meaning of the given idiom.

To take one's hat off

- Ans 1. To admire someone
 2. To fool someone
 3. To please someone
 4. To feel hot

Question ID : **2390871022**
Status : **Answered**
Chosen Option : **3**

Q.13 Select the most appropriate option to fill in the blank.

Man _____ a strong desire to accumulate wealth.

- Ans
- 1. have
 - 2. has
 - 3. is having
 - 4. had

Question ID : 2390871009
Status : Answered
Chosen Option : 2

Q.14 Select the most appropriate option to substitute the underlined segment in the given sentence. If there is no need to substitute it, select No Improvement.

He not only speaks Hindi fluently but English as well as.

- Ans
- 1. but also English
 - 2. No Improvement
 - 3. but English too as well
 - 4. as well as English

Question ID : 2390871006
Status : Answered
Chosen Option : 1

Q.15 Select the most appropriate option to substitute the underlined segment in the given sentence. If there is no need to substitute it, select No Improvement.

You must apologise with him for this.

- Ans
- 1. from
 - 2. of
 - 3. No Improvement
 - 4. to

Question ID : 2390871008
Status : Answered
Chosen Option : 4

Q.16 Find the part of the given sentence that has an error in it. If there is no error, choose 'No error'.

I did not see anybody in the auditorium. /No error

- Ans
- 1. in the auditorium
 - 2. I did not
 - 3. No error
 - 4. see anybody

Question ID : 2390871005
Status : Answered
Chosen Option : 3

Q.17 Find the part of the given sentence that has an error in it. If there is no error, choose 'No error'.

The funding for the project will be entirely born on the centre. /No error

- Ans
- 1. will be entirely
 - 2. The funding for the project
 - 3. born on the centre
 - 4. No error

Question ID : 2390871004
Status : Answered
Chosen Option : 3

Q.18 Choose the most appropriate word that can substitute the given group of words.

Yearly celebration of a date or an event

- Ans
- 1. Anniversary
 - 2. Gala
 - 3. Bash
 - 4. Carnival

Question ID : 2390871023
Status : Answered
Chosen Option : 1

Comprehension:

In the following passage some words have been deleted. Fill in the blanks with the help of the alternatives given. Select the most appropriate option for each blank.

The Narmada River, (1)_____ called the Rewa was previously known (2)____ Nerbudda. It is a river in central India along (3)_____ the Godavari and the Krishna. It is also (4)____ as the "Life Line of Gujarat and Madhya Pradesh" for its huge (5)_____ to these states. The Narmada rises from Amarkantak Plateau near Anuppur district.

SubQuestion No : 19

Q.19 Select the most appropriate option for blank No. 1.

- Ans
- 1. or
 - 2. but
 - 3. and
 - 4. also

Question ID : 2390871012
Status : Answered
Chosen Option : 4

Comprehension:

In the following passage some words have been deleted. Fill in the blanks with the help of the alternatives given. Select the most appropriate option for each blank.

The Narmada River, (1)_____ called the Rewa was previously known (2)____ Nerbudda. It is a river in central India along (3)_____ the Godavari and the Krishna. It is also (4)____ as the "Life Line of Gujarat and Madhya Pradesh" for its huge (5)_____ to these states. The Narmada rises from Amarkantak Plateau near Anuppur district.

SubQuestion No : 20

Q.20 Select the most appropriate option for blank No. 2.

- Ans
- 1. so
 - 2. even
 - 3. as

4. by

Question ID : 2390871013

Status : Answered

Chosen Option : 3

Comprehension:

In the following passage some words have been deleted. Fill in the blanks with the help of the alternatives given. Select the most appropriate option for each blank.

The Narmada River, (1)_____ called the Rewa was previously known (2)____ Nerbudda. It is a river in central India along (3)_____ the Godavari and the Krishna. It is also (4)____ as the "Life Line of Gujarat and Madhya Pradesh" for its huge (5)_____ to these states. The Narmada rises from Amarkantak Plateau near Anuppur district.

SubQuestion No : 21

Q.21 Select the most appropriate option for blank No. 3.

- Ans
- 1. beside
 - 2. to
 - 3. with
 - 4. by

Question ID : 2390871014

Status : Answered

Chosen Option : 3

Comprehension:

In the following passage some words have been deleted. Fill in the blanks with the help of the alternatives given. Select the most appropriate option for each blank.

The Narmada River, (1)_____ called the Rewa was previously known (2)____ Nerbudda. It is a river in central India along (3)_____ the Godavari and the Krishna. It is also (4)____ as the "Life Line of Gujarat and Madhya Pradesh" for its huge (5)_____ to these states. The Narmada rises from Amarkantak Plateau near Anuppur district.

SubQuestion No : 22

Q.22 Select the most appropriate option for blank No. 4.

- Ans
- 1. known
 - 2. told
 - 3. said
 - 4. spoken

Question ID : 2390871015

Status : Answered

Chosen Option : 1

Comprehension:

In the following passage some words have been deleted. Fill in the blanks with the help of the alternatives given. Select the most appropriate option for each blank.

The Narmada River, (1)_____ called the Rewa was previously known (2)____ Nerbudda. It is a river in central India along (3)_____ the Godavari and the Krishna. It is also (4)____ as the "Life Line of Gujarat and Madhya Pradesh" for its huge (5)_____ to these states. The Narmada rises from Amarkantak Plateau near Anuppur district.

SubQuestion No : 23

Q.23 Select the most appropriate option for blank No. 5.

- Ans
- 1. donation
 - 2. contribution

- 3. irrigation
- 4. reformation

Question ID : 2390871016
 Status : Answered
 Chosen Option : 2

Q.24 Select the most appropriate option to fill in the blank.

I _____ him to use my bike to go to the office.

- Ans
- 1. admonished
 - 2. sanctioned
 - 3. granted
 - 4. allowed

Question ID : 2390871027
 Status : Answered
 Chosen Option : 4

Q.25 Select the most appropriate option to fill in the blank.

When are you _____ to write to your friend?

- Ans
- 1. go
 - 2. going
 - 3. goes
 - 4. gone

Question ID : 2390871010
 Status : Answered
 Chosen Option : 2

Section : General Intelligence & Reasoning

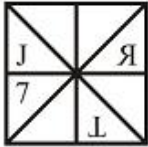
Q.1 In the following question, select the figure which can be placed at the sign of question mark (?) from the given alternatives.



Ans

- 1.
- 2.
- 3.

✗ 4.



Question ID : 239087768

Status : Answered

Chosen Option : 2

Q.2 Six shopkeepers K, P, R, X, A and C are sitting around a circular table facing towards the centre (not necessarily in the same order). C is second to the left of A. P is to the immediate right of K. X is second to the right of R. A is to the immediate left of X. Which of the following pair of shopkeepers represents the immediate neighbours of X?

- Ans
- 1. A and K
 - 2. A and C
 - 3. K and P
 - 4. A and R

Question ID : 239087758

Status : Answered

Chosen Option : 1

Q.3 Identify the diagram that best represents the relationship among the given classes.

Rat, Shoes, Bat

Ans

- 1.
- 2.
- 3.
- 4.

Question ID : 239087773

Status : Answered

Chosen Option : 2

Q.4 Select the option in which the words share the same relationship as that shared by the given pair of words.

Garage : Mechanic :: ?

- Ans
- 1. Temple : Teacher
 - 2. Teacher : School
 - 3. Hospital : Doctor

Question ID : 239087750
Status : Answered
Chosen Option : 3

Q.5 In the following question below are given some statements followed by some conclusions based on those statements. Taking the given statements to be true even if they seem to be at variance from commonly known facts. Read all the conclusions and then decide which of the given conclusion logically follows the given statements.

Statements:

- I. Some D are A.
- II. All A are B.

Conclusions:

- I. Some B are D.
- II. All D are A.

- Ans 1. Only conclusion I follows
 2. Neither conclusion follow
 3. Only conclusion II follows
 4. Both conclusion I and II follows

Question ID : 239087761
Status : Answered
Chosen Option : 1

Q.6 Select the number that can replace the question mark (?) in the following series.

1138, 1150, 1163, 1177, ?

- Ans 1. 1204
 2. 1192
 3. 1196
 4. 1202

Question ID : 239087762
Status : Answered
Chosen Option : 2

Q.7 In a certain code language, 'TABLE' is written as '2012125', 'ROBIN' is written as '18152914'. What is the code for 'NATOM' in that code language?

- Ans 1. 142101153
 2. 141201315
 3. 142011513
 4. 141201513

Question ID : 239087755
Status : Answered
Chosen Option : 4

Q.8 In a certain code language, 'STORED' is written as 'URQPGB'. What is the code for 'POINTA' in that code language?

- Ans 1. SNMLWZ
 2. RMKLVY

- 3. RMLKVY
- 4. SNLMWZ

Question ID : 239087754
Status : Answered
Chosen Option : 2

Q.9 After interchanging the given two numbers, what will be the value of $6 + 7 \times 3 - 8 \div 4$?

3 and 6

- Ans
- 1. 42
 - 2. 43
 - 3. 41
 - 4. 38

Question ID : 239087767
Status : Answered
Chosen Option : 2

Q.10 There are five cinema halls in a building - Hall 1, Hall 2, Hall 3, Hall 4 and Hall 5. They are one above the other. Hall 1 is at the bottom, then Hall 2 above it and so on. Five movies A, B, C, D and E are displayed in these given halls. Only one movie is displayed in a particular cinema hall. Each movie is displayed only one time. Movie E is displayed at a even numbered hall. Movie B is displayed at Hall 1. Movie A is displayed at the hall just below E. Movie D is not displayed at even numbered hall. Which of the following statement is not correct about movie C?

- Ans
- 1. C is displayed at the hall just below A.
 - 2. B is displayed at the hall just below C
 - 3. C is displayed at the even number Hall.
 - 4. C is displayed at the odd number Hall.

Question ID : 239087759
Status : Answered
Chosen Option : 3

Q.11 In a certain code language, 'GUD' is written as '31', 'PUH' is written as '44'. What is the code for 'FAR' in that code language?

- Ans
- 1. 24
 - 2. 26
 - 3. 23
 - 4. 25

Question ID : 239087756
Status : Answered
Chosen Option : 1

Q.12 Select the option that is related to the third term in the same way as the second term is related to the first term.

Septagon : Figure :: Male : ?

- Ans
- 1. Female
 - 2. Gender
 - 3. Brother

 4. Work

Question ID : 239087751
Status : Answered
Chosen Option : 2

Q.13 Select the option that is related to the third number in the same way as the second number is related to the first number.

39 : 117 :: 45 : ?

- Ans 1. 135
 2. 145
 3. 155
 4. 125

Question ID : 239087764
Status : Answered
Chosen Option : 1

Q.14 In a certain code language, 'PANKIL' is written as 'SDQNLO'. What is the code for 'ROHANS' in that code language?



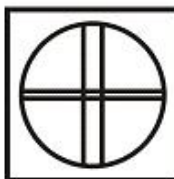
- Ans 1. URKDQU
 2. VRKDQV
 3. VRKDQU
 4. URKDQV

Question ID : 239087753
Status : Answered
Chosen Option : 4

Q.15 From the given answer figures, select the one in which the question figure is hidden/embedded.



Ans

1. 
2. 
3. 

✗ 4.

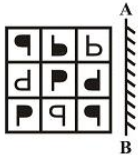


Question ID : 239087770

Status : Answered

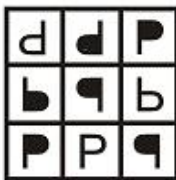
Chosen Option : 2

Q.16 If a mirror is placed on the line AB, then which of the answer figures is the right image of the given figure?



Ans

✓ 1.



✗ 2.



✗ 3.



✗ 4.

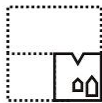
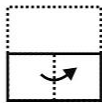
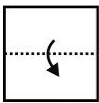


Question ID : 239087771

Status : Answered

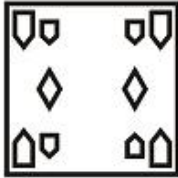
Chosen Option : 1

Q.17 A piece of paper is folded and punched as shown below in the question figures. From the given answer figures, indicate how it will appear when opened?

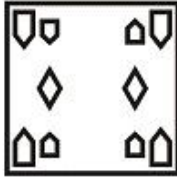


Ans

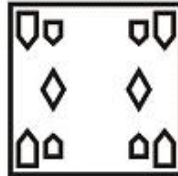
✗ 1.



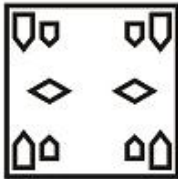
✗ 2.



✓ 3.



✗ 4.



Question ID : 239087772

Status : Answered

Chosen Option : 3

Q.18 Six friends B, D, F, H, J and L are sitting around a circular table facing towards the centre (not necessarily in the same order). B is to the immediate right of L. D is second to the left of J. F is second to the left of H. L is second to the right of H. Who is sitting third to the left of F?

Ans

✗ 1. B

✗ 2. L

✗ 3. D

✓ 4. J

Question ID : 239087757

Status : Answered

Chosen Option : 4

Q.19 In the following question, select the number which can be placed at the sign of question mark (?) from the given alternatives.

9 3 7
6 2 8
4 5 3
38 20 ?

Ans

✗ 1. 54

✗ 2. 72

✗ 3. 18

✓ 4. 36

Question ID : 239087765

Status : Answered

Q.20 Select the number that can replace the question mark (?) in the following series.

16, 17, 21, 30, 46, ?

- Ans
- 1. 81
 - 2. 63
 - 3. 77
 - 4. 71

Question ID : 239087763

Status : Answered

Chosen Option : 4

Q.21 A series is given with one term missing. Select the correct alternative from the given ones that will complete the series.

RAM, VET, ZIA, ?, HQO

- Ans
- 1. DNI
 - 2. DMI
 - 3. DNH
 - 4. DMH

Question ID : 239087749

Status : Answered

Chosen Option : 4

Q.22 Select the option that is related to the third term in the same way as the second term is related to the first term.

JOM : KPN :: PET : ?

- Ans
- 1. QFV
 - 2. QDU
 - 3. QFU
 - 4. ODS

Question ID : 239087752

Status : Answered

Chosen Option : 3

Q.23 By interchanging the given two signs which of the following equation will be correct?

+ and -

- Ans
- 1. $9 + 16 - 11 \times 2 = 3$
 - 2. $13 - 14 \times 3 + 7 = 48$
 - 3. $11 \times 3 + 5 - 2 = 36$
 - 4. $16 \times 4 + 11 - 10 = 65$

Question ID : 239087766

Status : Answered

Chosen Option : 2

Q.24 In the following question below are given some statements followed by some conclusions

based on those statements. Taking the given statements to be true even if they seem to be at variance from commonly known facts. Read all the conclusions and then decide which of the given conclusion logically follows the given statements.

Statements:

- I. Some wires are black.
- II. Some wires are yellow.

Conclusions:

- I. Some black are yellow.
- II. Some black are wires.

- Ans
- 1. Only conclusion II follows
 - 2. Neither conclusion follow
 - 3. Only conclusion I follows
 - 4. Both conclusion I and II follows

Question ID : 239087760

Status : Answered

Chosen Option : 1

Q.25 Study the given pattern carefully and select the figure that will complete the pattern given in the question figure.



Ans

- 1.
- 2.
- 3.
- 4.

Question ID : 239087769

Status : Answered

Chosen Option : 2

Section : Numerical Aptitude

Q.1 A bus covers first 200 km of a journey in 4 hours and the next 600 km in 6 hours. What is the average speed of the bus for the whole journey?

- Ans
- 1. 60 km/h
 - 2. 80 km/h
 - 3. 100 km/h
 - 4. 90 km/h

Question ID : 239087891

Status : Answered

Chosen Option : 2

Q.2 What is the Least Common Multiple of all even numbers between 5 and 13?

- Ans
- 1. 180
 - 2. 60
 - 3. 120
 - 4. 90

Question ID : 239087874
Status : Answered
Chosen Option : 3

Q.3 Samrat alone can complete a work in 10 days and Virat alone can complete the same work in 40 days. If they are working on alternate days with Samrat starting the work, then in how many days will the total work be completed?

- Ans
- 1. 14 days
 - 2. 12 days
 - 3. 16 days
 - 4. 8 days

Question ID : 239087889
Status : Answered
Chosen Option : 3

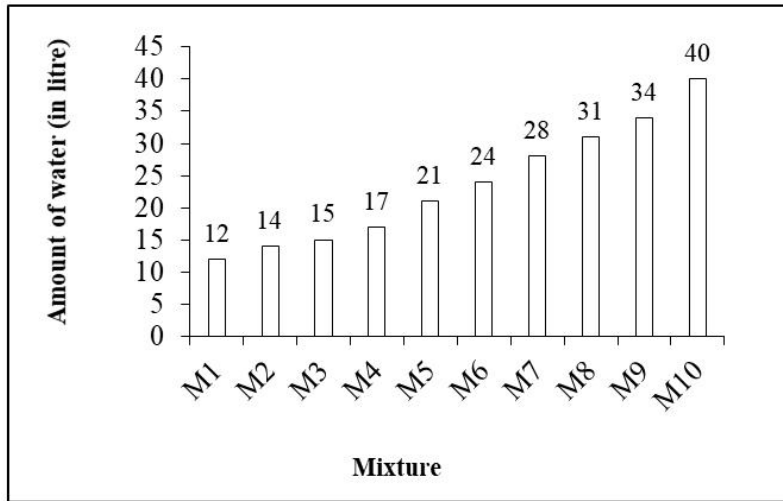
Q.4 What is the value of $\left\{ \frac{(0.7)^2 + 0.14 + (0.6)^2 + 0.18 + (0.5)^2 + 0.05}{4(2.5 \text{ of } 4 - 13 \times 0.25 \times 3)} \right\}$?

- Ans
- 1. $\frac{23}{2}$
 - 2. $\frac{25}{2}$
 - 3. $\frac{19}{2}$
 - 4. $\frac{21}{2}$

Question ID : 239087876
Status : Answered
Chosen Option : 4

Q.5

The Bar graph given below presents the amount (volume in litres) of water in ten different mixtures.



The amount of water in mixture M3 is what percent of amount of water in mixture M6?

- Ans
- 1. 44.5
 - 2. 56.5
 - 3. 50.5
 - 4. 62.5

Question ID : 239087897
 Status : Answered
 Chosen Option : 4

Q.6 A man sold a watch at a discount of 60% for ₹1560. What is the marked price of the watch?

- Ans
- 1. ₹3600
 - 2. ₹3300
 - 3. ₹3900
 - 4. ₹3700

Question ID : 239087879
 Status : Answered
 Chosen Option : 3

Q.7 What is the area of the largest square which can be inscribed in a circle of radius 14 cm?

(Take $\pi = \frac{22}{7}$)

- Ans
- 1. 484 cm²
 - 2. 784 cm²
 - 3. 196 cm²
 - 4. 392 cm²

Question ID : 239087894
 Status : Answered
 Chosen Option : 4

Q.8 The number of tables that can be purchased by a person in ₹2800 gets reduced by 20 if the price is increased by 40%. What is the initial price of each table?

- Ans 1. ₹40
 2. ₹36
 3. ₹48
 4. ₹56

Question ID : 239087881
Status : Answered
Chosen Option : 1

Q.9 The height of a right circular cone is 24 cm and the radius of its base is 7 cm. What is the cost of painting the curved surface area of the cone at the rate of ₹6 per cm^2 ?
(Take $\pi = \frac{22}{7}$)

- Ans 1. ₹3300
 2. ₹3600
 3. ₹880
 4. ₹4200

Question ID : 239087893
Status : Answered
Chosen Option : 1

Q.10 What is the average of all the multiples of 6 from 20 to 80?

- Ans 1. 50
 2. 52
 3. 51
 4. 48

Question ID : 239087878
Status : Answered
Chosen Option : 3

Q.11 A certain sum invested on compound interest (compounded annually) grows to ₹5040 in three years. If the rate of interest is 20% for the first year, 40% for the second and 50% for the third year, then what is the sum?

- Ans 1. ₹1800
 2. ₹2000
 3. ₹2566
 4. ₹1210

Question ID : 239087888
Status : Answered
Chosen Option : 2

Q.12 A sum of ₹1500 is invested at simple interest for x months. If the rate of interest is $\frac{x}{8}\%$ per annum, then the sum grows to ₹1590. What is the value of x ?

- Ans 1. 2.4
 2. 32
 3. 24
 4. 3.2

Question ID : 239087887
Status : Answered
Chosen Option : 3

Q.13 Average of 12 numbers is 48. If each number is increased by 11, then what will be the new average?

- Ans 1. 59
 2. 13
 3. 64
 4. 58

Question ID : 239087877
Status : Answered
Chosen Option : 1

Q.14 The ratio of two whole numbers is 5 : 7. Which of the following can be their sum?

- Ans 1. 46
 2. 54
 3. 60
 4. 68

Question ID : 239087885
Status : Answered
Chosen Option : 3

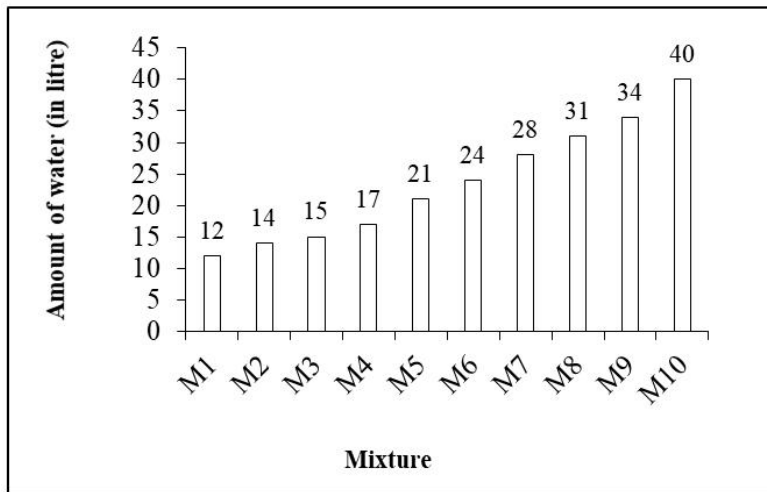
Q.15 The monthly incomes of Mohit and Prakash are in the ratio 2 : 3. Their monthly expenditures are in the ratio 3 : 5. If each saves ₹5000 per month, then what is the sum of monthly incomes of Mohit and Prakash?

- Ans 1. ₹42000
 2. ₹40000
 3. ₹60000
 4. ₹50000

Question ID : 239087886
Status : Answered
Chosen Option : 4

Q.16

The Bar graph given below presents the amount (volume in litres) of water in ten different mixtures.



The amount of water in mixture M7 is how much more than the average amount of water per mixture?

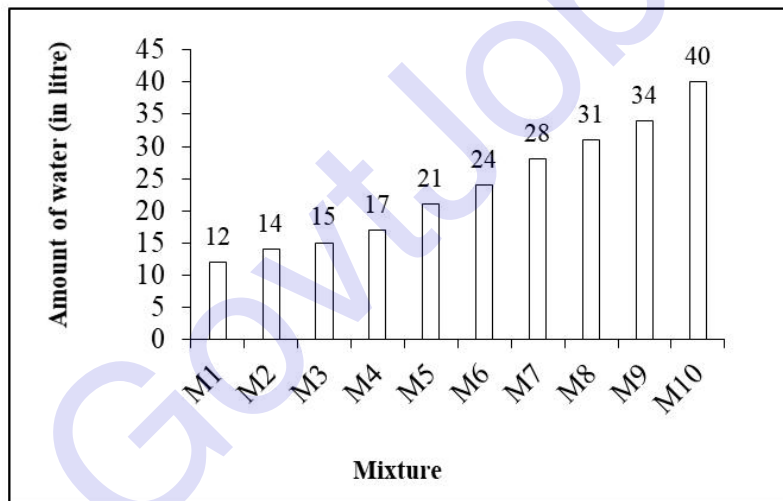
- Ans
- 1. 4.6
 - 2. 4.4
 - 3. 4.2
 - 4. 4

Question ID : 239087898

Status : Answered

Chosen Option : 2

Q.17 The Bar graph given below presents the amount (volume in litres) of water in ten different mixtures.



What is the average amount of water per mixture?

- Ans
- 1. 23.6 litre
 - 2. 24.8 litre
 - 3. 24 litre
 - 4. 24.4 litre

Question ID : 239087896

Status : Answered

Chosen Option : 1

Q.18 What is the area of a triangle whose sides are 7 cm, 24 cm and 25 cm?

- Ans
- 1. 108 cm^2
 - 2. 84 cm^2
 - 3. 42 cm^2
 - 4. 72 cm^2

Question ID : 239087895
Status : Answered
Chosen Option : 2

Q.19 The cost price of two articles is the same. One article among them is sold at a profit of 15% and the other is sold at a profit of 12%. If the difference between their selling prices is ₹18, what is the cost price of each article?

- Ans
- 1. ₹690
 - 2. ₹570
 - 3. ₹600
 - 4. ₹400

Question ID : 239087883
Status : Answered
Chosen Option : 3

Q.20 What is the value of $\frac{(1-\frac{1}{4})+(\frac{1}{2} \text{ of } \frac{1}{2}) \div \frac{2}{5}}{\frac{2}{5} \div \frac{1}{4} + \frac{3}{2}(2-\frac{8}{5})}$?

- Ans
- 1. $\frac{5}{11}$
 - 2. $\frac{2}{3}$
 - 3. $\frac{5}{8}$
 - 4. $\frac{4}{5}$

Question ID : 239087875
Status : Answered
Chosen Option : 3

Q.21 A man can finish a piece of work in 15 days. A woman can complete the same work in 10 days. Both work together for 5 days, then the man leaves. How many days will be taken by the woman to finish the remaining work?

- Ans
- 1. $1\frac{2}{3}$
 - 2. $2\frac{2}{3}$
 - 3. $1\frac{1}{3}$
 - 4. $2\frac{1}{2}$

Question ID : 239087890

Status : Answered

Chosen Option : 1

Q.22 What is the median of 7, 18, 6, 9, 4, 15, 21, 14, 26?

- Ans
- 1. 14
 - 2. 16
 - 3. 14.5
 - 4. 15

Question ID : 239087880

Status : Answered

Chosen Option : 1

Q.23 A boat covers 64 km upstream in 8 hours and 120 km downstream in 12 hours. What is the speed (in m/s) of the boat in still water?

- Ans
- 1. 3.5
 - 2. 2
 - 3. 2.5
 - 4. 3

Question ID : 239087892

Status : Answered

Chosen Option : 3

Q.24 The difference between the cost price and the selling price of a bat is ₹180. If there is a profit of 20%, then what is the selling price of the bat?

- Ans
- 1. ₹1040
 - 2. ₹1120
 - 3. ₹1240
 - 4. ₹1080

Question ID : 239087882

Status : Answered

Chosen Option : 4

Q.25 If $X^2 + Y^2 = 100$ and $X : Y = 4 : 3$, then what is the value of $X^2 - Y^2$?

- Ans
- 1. 28
 - 2. 18
 - 3. 36
 - 4. 24

Question ID : 239087884

Status : Answered

Chosen Option : 1

Section : General awareness

Q.1 What will be the size of image formed by a concave mirror when an object placed between Pole and Focus?

Ans

- 1. Same Size
- 2. Diminished
- 3. Point Size
- 4. Enlarged

Question ID : 239087642
Status : Answered
Chosen Option : 4

Q.2 Who is known as 'Haryana Hurricane'?

- Ans
- 1. Kapil Dev
 - 2. Yuzvendra Chahal
 - 3. Virendra Sehwag
 - 4. Jogindar Rao

Question ID : 239087630
Status : Answered
Chosen Option : 1

Q.3 Where was Guru Nanak Dev born?

- Ans
- 1. Jalalabad
 - 2. Talwandi
 - 3. Phillaur
 - 4. Gurdaspur

Question ID : 239087648
Status : Answered
Chosen Option : 4

Q.4 In which of the following state 'Hampi Dance Festival' is celebrated?

- Ans
- 1. Tamil Nadu
 - 2. Telangana
 - 3. Karnataka
 - 4. Kerala

Question ID : 239087625
Status : Answered
Chosen Option : 1

Q.5 Which dynasty had developed the Gandhara School of Art in ancient India?

- Ans
- 1. Kushana dynasty
 - 2. Chola dynasty
 - 3. Mauryan dynasty
 - 4. Gupta dynasty

Question ID : 239087647
Status : Answered
Chosen Option : 4

Q.6 Who was appointed as Assembly's Constitutional Adviser in 1946 during the framing of Indian Constitution?

- Ans
- 1. B.R. Ambedkar
 - 2. B.N. Rau
 - 3. Gopalswami Ayengar
 - 4. K.M. Munshi

Question ID : 239087637
Status : Answered
Chosen Option : 4

Q.7 When was the national anthem adopted in its Hindi version?

- Ans
- 1. 24 January 1950
 - 2. 26 January 1950
 - 3. 2 October 1948
 - 4. 15 August 1947

Question ID : 239087635
Status : Answered
Chosen Option : 1

Q.8 What combination of paternal chromosome results in a female?

- Ans
- 1. YZ
 - 2. ZX
 - 3. XY
 - 4. XX

Question ID : 239087640
Status : Answered
Chosen Option : 4

Q.9 The Hanging Gardens of Babylon is associated to which of the following ancient cultures?

- Ans
- 1. Harappan
 - 2. Mesopotamia
 - 3. Egyptian
 - 4. Chinese

Question ID : 239087626
Status : Answered
Chosen Option : 2

Q.10 In which year the National Food Security Act was passed in India?

- Ans
- 1. 2013
 - 2. 2014
 - 3. 2011
 - 4. 2012

Question ID : 239087643
Status : Answered

Q.11 Which of the following synthetic chemical is responsible for ozone layer depletion?

- Ans
- 1. Polyvinylchloride
 - 2. Chlorofluorocarbons
 - 3. Biopolymer
 - 4. Methanol

Question ID : 239087641
Status : Answered
Chosen Option : 2

Q.12 Who is the Minister of Youth Affairs and Sports in India as of June 2019?

- Ans
- 1. Rajyavardhan Singh Rathore
 - 2. Jitendra Singh
 - 3. Vijay Goel
 - 4. Kiren Rijju

Question ID : 239087627
Status : Answered
Chosen Option : 1

Q.13 Where is headquarter of Allahabad Bank situated?

- Ans
- 1. Kolkata
 - 2. Hyderabad
 - 3. Allahabad
 - 4. Mumbai

Question ID : 239087633
Status : Answered
Chosen Option : 1

Q.14 Which of the following gas causes rancidity in food product?

- Ans
- 1. Oxygen
 - 2. Hydrogen
 - 3. Carbon monoxide
 - 4. Nitrogen

Question ID : 239087638
Status : Answered
Chosen Option : 4

Q.15 Which article in Indian Constitution states about Fundamental Duties?

- Ans
- 1. Article 31C
 - 2. Article 15
 - 3. Article 51A
 - 4. Article 21A

Question ID : 239087636

Status : Answered

Chosen Option : 3

Q.16 What is the name of Captain of Indian Mens National Hockey team 2019?

- Ans
- 1. Manpreet Singh
 - 2. Sandeep Singh
 - 3. Hardik Singh
 - 4. Jaskaran Singh

Question ID : 239087628

Status : Answered

Chosen Option : 1

Q.17 With reference to the GI Tag in India, which of these following pairs is correct?

- Ans
- 1. Kani Shawl - Gujarat
 - 2. Aranmula Kannadi - Karnataka
 - 3. East India Leather - Tamil Nadu
 - 4. Chanderi saree - Maharashtra

Question ID : 239087624

Status : Answered

Chosen Option : 1

Q.18 Which of the following Motif is present on 2000 Rupee note of Indian Currency?

- Ans
- 1. Sun Temple
 - 2. Hampi with Chariot
 - 3. Mangalyaan
 - 4. Sanchi Stupa

Question ID : 239087632

Status : Answered

Chosen Option : 3

Q.19 Which state in India has made roof top rainwater harvesting structure compulsory to all the houses in the state?

- Ans
- 1. Tamil Nadu
 - 2. Maharastra
 - 3. Kerala
 - 4. Odisha

Question ID : 239087645

Status : Answered

Chosen Option : 1

Q.20 Guru Ghasidas National Park is located in:

- Ans
- 1. Madhya Pradesh
 - 2. Chhattisgarh
 - 3. Bihar

Question ID : 239087644
Status : Answered
Chosen Option : 2

Q.21 'Amoeba' belongs to which of the following kingdom?

- Ans
- 1. Monera
 - 2. Protista
 - 3. Fungi
 - 4. Animalia

Question ID : 239087639
Status : Answered
Chosen Option : 1

Q.22 Who among the following is the writer of the novel 'The room on the roof'?

- Ans
- 1. Manohar Malgonkar
 - 2. R. K. Narayan
 - 3. Ruskin Bond
 - 4. Khushwant Singh

Question ID : 239087629
Status : Answered
Chosen Option : 2

Q.23 Arundhati Roy is the recipient of which of the following International awards?

- Ans
- 1. Man Booker Prize
 - 2. Noble Prize
 - 3. Ramon Magsaysay
 - 4. Pulitzer Prize

Question ID : 239087631
Status : Answered
Chosen Option : 3

Q.24 Which of the following is NOT an Indian Multi National Company?

- Ans
- 1. Unilever
 - 2. Aditya Birla Group
 - 3. Infosys
 - 4. Mahindra Group

Question ID : 239087634
Status : Answered
Chosen Option : 4

Q.25 What was the name of Swami Vivekananda's Guru?

- Ans
- 1. Ramkrishna Paramhansa
 - 2. Adi Shankaracharya

Download More Papers From GovtJobsAlert.In

X 3. Ramana Maharishi

X 4. Paramhansa Yogananda

Question ID : 239087646

Status : Answered

Chosen Option : 1

GovtJobsAlert.In